

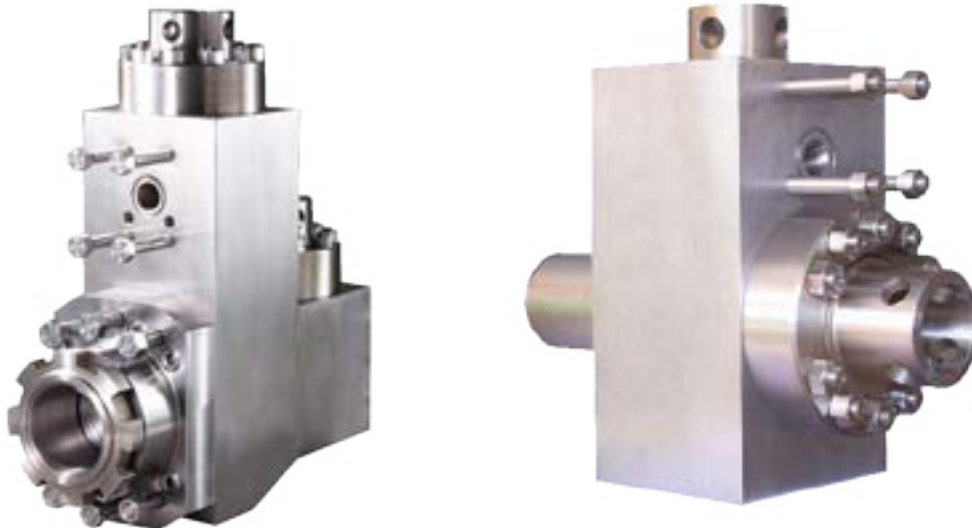
INTRODUCTION

FLUID END MODULES

Our high-strength, triple reduction, forged steel triplex fluid end modules are made from the highest alloy steel. Heat treated for long working life, they are machined to perfection and packaged for delivery with anticorrosion protection. The precision-made jewelry-like exterior finish reflects our superior quality.

Features

- Completely interchangeable with OEM.
- Premium-forged alloy steel.
- Made on CNC boring mills.
- Strict computer controlled heat treat procedures.
- Rigid inspection.
- Rated for all drilling operations up to 7,500 psi.



FLUID END EXPENDABLES

LANSHI
3NB-1000C

	LINERS		LINER GASKETS	PISTONS			PISTON RUBBERS
SIZE	PART NUMBER	PART NUMBER	URETHANE BONDED	RUBBER BONDED	N'DURALL BONDED	REPLACEABLE RUBBER	PART NUMBER
4 1/2"	TS-4255-44HP	G-274 *	LLU-44-B15	LL-44-B15	HPW-44-B15	I-44-B15	TM-44-KR
5"	TS-4255-50HP	G-265 *	LLU-50-B15	LL-50-B15	HPW-50-B15	I-50-B15	TM-50-BR
5 1/2"	TS-4255-54HP	G-263 *	LLU-54-B15	LL-54-B15	HPW-54-B15	I-54-B15	TM-54-BR
5 3/4"	TS-4255-56HP	-	LLU-56-B15	LL-56-B15	HPW-56-B15	I-56-B15	TM-56-BR
6"	TS-4255-60HP	G-261 *	LLU-60-B15	LL-60-B15	HPW-60-B15	I-60-B15	TM-60-BR
6 1/4"	TS-4255-62HP	-	LLU-62-L15	LL-62-L15	HPW-62-L15	I-62-L15	TM-62-BR
6 1/2"	TS-4255-64HP	G-283 *	LLU-64-L15	LL-64-L15	HPW-64-L15	I-64-L15	TM-64-LR
6 3/4"	TS-4255-66HP	-	LLU-66-L15	LL-66-L15	HPW-66-L15	I-66-L15	TM-66-LR
7"	TS-4255-70HP	-	LLU-70-L15	LL-70-L15	HPW-70-L15	I-70-L15	TM-70-LR
VALVES, SEATS, SPRINGS					GASKETS		
	4 WEB DESIGN	3 WEB DESIGN	FULL OPEN (1)	FULL OPEN (2)		PART NUMBER	
VALVE	TS-6-EH	-	TS-0995M	TS-6-V1	VALVE COVER GASKET	TS-107.04.110.55	
SEAT	TS-6-ADDB6	-	TS-1380M	TS-6-S6	CYLINDER HEAD GASKET	TS-107.14.110.13	
SPRING	TS-5710-115	-	-	TS-5710-115L	WEAR PLATE GASKET	TS-107.04.09	
INSERT (Urethane)	TS-6-WI	-	TS-6-MI	TS-6-FI	EXTENSION ROD SEAL	TS-107.11.97.00	
INSERT (Rubber)	TS-7-WR	-	-	TS-6-FR	EXTENSION ROD BAFFLE	TS-107.11.70.00	
PISTON ROD & EXTENSION ROD							
ROD CLAMP	PISTON NUT	THREADED TYPE PISTON ROD	CLAMP TYPE PISTON ROD	SUB ROD	THREADED TYPE EXTENSION ROD	CLAMP TYPE EXTENSION ROD	
TS-107.14.125.00	TS-107.04.120.00	-	TS-107.11.110.39	-	-	TS-107.11.01.02	
FLUID END MODULE							
FLUID END MODULE STUDDED			MODULE SEAL SET		STUDS & NUTS SET		
TS-107.14.110.14			TMNB10-SEALKIT		TMNB10-STUDSET		

TSC does not warrant or represent that any of such information is accurate, or that any products listed are compatible with each other.
Any deviations from the OEM products should be verified as to compatibility.

TSC Manufacturing and Supply LLC, 13788 West Road, Suite 100, Houston, Texas 77041, USA
Tel: +1 832 456 3900 Fax: +1 832 456 3998 E-mail: sales@t-s-c.com