

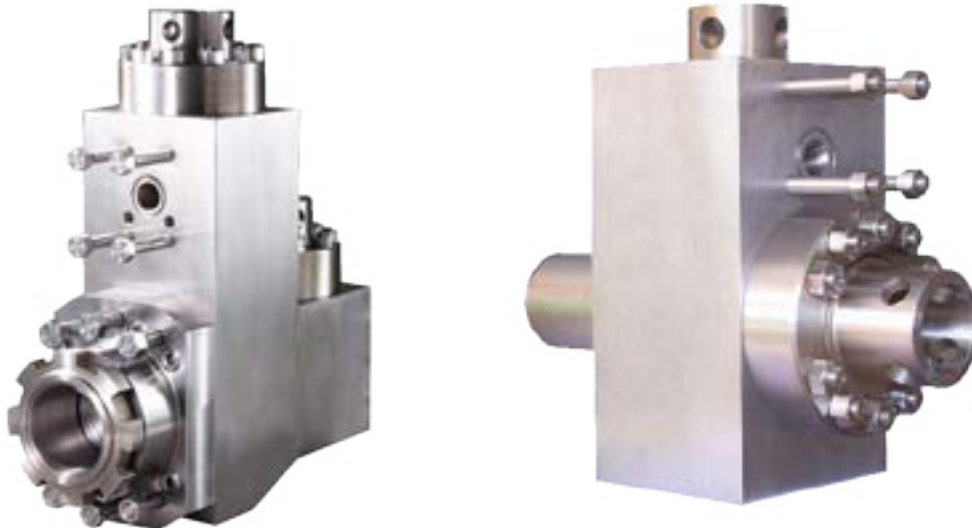
## INTRODUCTION

### FLUID END MODULES

Our high-strength, triple reduction, forged steel triplex fluid end modules are made from the highest alloy steel. Heat treated for long working life, they are machined to perfection and packaged for delivery with anticorrosion protection. The precision-made jewelry-like exterior finish reflects our superior quality.

#### Features

- Completely interchangeable with OEM.
- Premium-forged alloy steel.
- Made on CNC boring mills.
- Strict computer controlled heat treat procedures.
- Rigid inspection.
- Rated for all drilling operations up to 7,500 psi.



TSC Manufacturing and Supply LLC, 13788 West Road, Suite 100, Houston, Texas 77041, USA  
Tel: +1 832 456 3900 Fax: +1 832 456 3998 E-mail: sales@t-s-c.com

**FLUID END EXPENDABLES**

**BOMCO**

**F-1300**

**7 x 12**

|                                       | LINERS                         | ZIRCONIA LINERS        | LINER GASKETS            | PISTONS                     |                        |                          |                    | PISTON RUBBERS |
|---------------------------------------|--------------------------------|------------------------|--------------------------|-----------------------------|------------------------|--------------------------|--------------------|----------------|
| SIZE                                  | PART NUMBER                    | PART NUMBER            | PART NUMBER              | URETHANE BONDED             | RUBBER BONDED          | N'DURALL BONDED          | REPLACEABLE RUBBER | PART NUMBER    |
| 4"                                    | TS-2145-40HP                   | TS-07499400            | G-800 *                  | LLU-40-K15                  | LL-40-K15              | HPW-40-K15               | I-40-K15           | TM-40-KR       |
| 4 1/2"                                | TS-2145-44HP                   | TS-07499450            | G-800 *                  | LLU-44-B15                  | LL-44-B15              | HPW-44-B15               | I-44-B15           | TM-44-BR       |
| 5"                                    | TS-2145-50HP                   | TS-07499500            | G-800 *                  | LLU-50-B15                  | LL-50-B15              | HPW-50-B15               | I-50-B15           | TM-50-BR       |
| 5 1/2"                                | TS-2145-54HP                   | TS-07499550            | G-800 *                  | LLU-54-B15                  | LL-54-B15              | HPW-54-B15               | I-54-B15           | TM-54-BR       |
| 5 3/4"                                | TS-2145-56HP                   | TS-07499575            | G-800 *                  | LLU-56-B15                  | LL-56-B15              | HPW-56-B15               | I-56-B15           | TM-56-BR       |
| 6"                                    | TS-2145-60HP                   | TS-07499600            | G-800 *                  | LLU-60-B15                  | LL-60-B15              | HPW-60-B15               | I-60-B15           | TM-60-BR       |
| 6 1/4"                                | TS-2145-62HP                   | TS-07499625            | G-800 *                  | LLU-62-L15                  | LL-62-L15              | HPW-62-L15               | I-62-L15           | TM-62-LR       |
| 6 1/2"                                | TS-2145-64HP                   | TS-07499650            | G-800 *                  | LLU-64-L15                  | LL-64-L15              | HPW-64-L15               | I-64-L15           | TM-64-LR       |
| 6 3/4"                                | TS-2145-66HP                   | TS-07499675            | G-800 *                  | LLU-66-L15                  | LL-66-L15              | HPW-66-L15               | I-66-L15           | TM-66-LR       |
| 7"                                    | TS-2145-70HP                   | TS-07499700            | G-800 *                  | LLU-70-L15                  | LL-70-L15              | HPW-70-L15               | I-70-L15           | TM-70-LR       |
| <b>BOMCO PART NUMBER</b>              | AH130102051200                 | AH1301010512           | AH130102050800           |                             |                        |                          |                    |                |
| <b>VALVES, SEATS, SPRINGS</b>         |                                |                        |                          | <b>GASKETS</b>              |                        |                          |                    |                |
|                                       | <b>4 WEB DESIGN</b>            | <b>FULL OPEN</b>       | <b>BOMCO PART NUMBER</b> |                             | <b>TSC PART NUMBER</b> | <b>BOMCO PART NUMBER</b> |                    |                |
| <b>VALVE</b>                          | TS-7-EEF                       | TS-7-V1                | AH0000020300             | <b>VALVE COVER GASKET</b>   | G-741 *                | AH1301010510             |                    |                |
| <b>SEAT</b>                           | TS-7-DDB1                      | TS-7-S1                | AH0000020300             | <b>CYLINDER HEAD GASKET</b> | G-801 *                | AH1301010508             |                    |                |
| <b>SPRING</b>                         | TS-5710-115                    | TS-5710-115L           | AH00000101               | <b>WEAR PLATE GASKET</b>    | G-800 *                | AH1301010512             |                    |                |
| <b>INSERT (Urethane)</b>              | TS-7-WI                        | TS-7-FI                | AH000002030103           |                             |                        |                          |                    |                |
| <b>PISTON ROD &amp; EXTENSION ROD</b> |                                |                        |                          |                             |                        |                          |                    |                |
|                                       | <b>ROD CLAMP</b>               | <b>PISTON NUT</b>      | <b>PISTON ROD</b>        | <b>EXTENSION ROD</b>        |                        |                          |                    |                |
| TSC PART NUMBER                       | TMFB6-03-08                    | TM-NUT                 | TM-2145                  | TMF16-01-06                 |                        |                          |                    |                |
| BOMCO PART NUMBER                     | AH130102050600                 | T501-303.0             | AH1301020504             | AH1301010409                |                        |                          |                    |                |
| <b>FLUID END MODULE</b>               |                                |                        |                          |                             |                        |                          |                    |                |
|                                       | <b>FLUID END MODULE STUDED</b> | <b>MODULE SEAL SET</b> |                          | <b>STUDS &amp; NUTS SET</b> |                        |                          |                    |                |
| TSC PART NUMBER                       | TS-6316-0357-00B               | TMFB6-SEALKIT          |                          | TMBJ16-STUDSET              |                        |                          |                    |                |
| BOMCO PART NUMBER                     | AH130102050100                 |                        |                          |                             |                        |                          |                    |                |

TSC does not warrant or represent that any of this information is accurate, or that any products listed are compatible with each other. Any deviations from the OEM products should be verified as to compatibility.

TSC Manufacturing and Supply LLC, 13788 West Road, Suite 100, Houston, Texas 77041, USA  
 Tel: +1 832 456 3900 Fax: +1 832 456 3998 E-mail: sales@t-s-c.com