

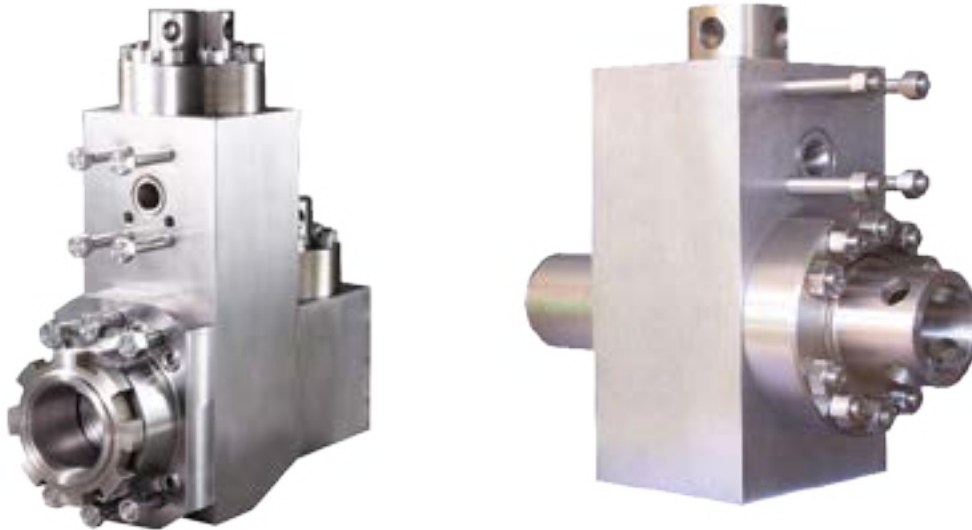
INTRODUCTION

FLUID END MODULES

Our high-strength, triple reduction, forged steel triplex fluid end modules are made from the highest alloy steel. Heat treated for long working life, they are machined to perfection and packaged for delivery with anticorrosion protection. The precision-made jewelry-like exterior finish reflects our superior quality.

Features

- Completely interchangeable with OEM.
- Premium-forged alloy steel.
- Made on CNC boring mills.
- Strict computer controlled heat treat procedures.
- Rigid inspection.
- Rated for all drilling operations up to 7,500 psi.



TSC Manufacturing and Supply LLC, 13788 West Road, Suite 100, Houston, Texas 77041, USA
Tel: +1 832 456 3900 Fax: +1 832 456 3998 E-mail: sales@t-s-c.com

FLUID END EXPENDABLES

BOMCO

F-1600

7 x 12

	LINERS	ZIRCONIA LINERS	LINER GASKETS	PISTONS				PISTON RUBBERS
SIZE	TSC PART NUMBER	PART NUMBER	TSC PART NUMBER	URETHANE BONDED	RUBBER BONDED	N'DURALL BONDED	REPLACEABLE RUBBER	PART NUMBER
4"	TS-2145-40HP	TS-07499400	G-800 *	LLU-40-K15	LL-40-K15	HPW-40-K15	I-40-K15	TM-40-KR
4 1/2"	TS-2145-44HP	TS-07499450	G-800 *	LLU-44-B15	LL-44-B15	HPW-44-B15	I-44-B15	TM-44-BR
5"	TS-2145-50HP	TS-07499500	G-800 *	LLU-50-B15	LL-50-B15	HPW-50-B15	I-50-B15	TM-50-BR
5 1/2"	TS-2145-54HP	TS-07499550	G-800 *	LLU-54-B15	LL-54-B15	HPW-54-B15	I-54-B15	TM-54-BR
5 3/4"	TS-2145-56HP	TS-07499575	G-800 *	LLU-56-B15	LL-56-B15	HPW-56-B15	I-56-B15	TM-56-BR
6"	TS-2145-60HP	TS-07499600	G-800 *	LLU-60-B15	LL-60-B15	HPW-60-B15	I-60-B15	TM-60-BR
6 1/4"	TS-2145-62HP	TS-07499625	G-800 *	LLU-62-L15	LL-62-L15	HPW-62-L15	I-62-L15	TM-62-LR
6 1/2"	TS-2145-64HP	TS-07499650	G-800 *	LLU-64-L15	LL-64-L15	HPW-64-L15	I-64-L15	TM-64-LR
6 3/4"	TS-2145-66HP	TS-07499675	G-800 *	LLU-66-L15	LL-66-L15	HPW-66-L15	I-66-L15	TM-66-LR
7"	TS-2145-70HP	TS-07499700	G-800 *	LLU-70-L15	LL-70-L15	HPW-70-L15	I-70-L15	TM-70-LR
BOMCO PART NUMBER	AH130102051200		AH1301010512	AH130102050800				
VALVES, SEATS, SPRINGS				GASKETS				
	4 WEB DESIGN	FULL OPEN	BOMCO PART NUMBER			TSC PART NUMBER	BOMCO PART NUMBER	
VALVE	TS-7-EEF	TS-7-V1	AH0000020300	VALVE COVER GASKET		G-741 *	AH1301010510	
SEAT	TS-7-DDB1	TS-7-S1	AH0000020300	CYLINDER HEAD GASKET		G-801 *	AH1301010508	
SPRING	TS-5710-115	TS-5710-115L	AH00000101	WEAR PLATE GASKET		G-800 *	AH1301010512	
INSERT (Urethane)	TS-7-WI	TS-7-FI	AH000002030103					
PISTON ROD & EXTENSION ROD								
	ROD CLAMP		PISTON NUT	PISTON ROD	EXTENSION ROD			
TSC PART NUMBER	TMFB6-03-08		TM-NUT	TM-2145	TMF16-01-06			
BOMCO PART NUMBER	AH130102050600		T501-303.0	AH1301020504	AH1301010409			
FLUID END MODULE								
	FLUID END MODULE STUDED		MODULE SEAL SET		STUDS & NUTS SET			
TSC PART NUMBER	TS-6316-0357-00B		TMF16-SEALKIT		TMBJ16-STUDSET			
BOMCO PART NUMBER	AH130102050100							

TSC does not warrant or represent that any of such information is accurate, or that any products listed are compatible with each other.
Any deviations from the OEM products should be verified as to compatibility.

TSC Manufacturing and Supply LLC, 13788 West Road, Suite 100, Houston, Texas 77041, USA
Tel: +1 832 456 3900 Fax: +1 832 456 3998 E-mail: sales@t-s-c.com