

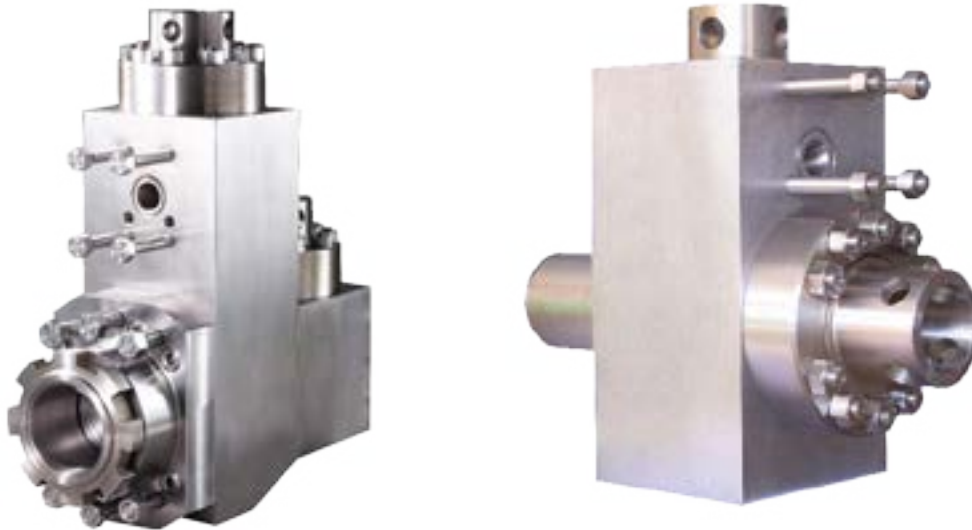
## INTRODUCTION

### FLUID END MODULES

Our high-strength, triple reduction, forged steel triplex fluid end modules are made from the highest alloy steel. Heat treated for long working life, they are machined to perfection and packaged for delivery with anticorrosion protection. The precision-made jewelry-like exterior finish reflects our superior quality.

#### Features

- Completely interchangeable with OEM.
- Premium-forged alloy steel.
- Made on CNC boring mills.
- Strict computer controlled heat treat procedures.
- Rigid inspection.
- Rated for all drilling operations up to 7,500 psi.



## FLUID END EXPENDABLES

**BOMCO**

**F-500**

**6-3/4 x 7-1/2**

	LINERS	LINER GASKETS	PISTONS				PISTON RUBBERS
SIZE	PART NUMBER	PART NUMBER	URETHANE BONDED	RUBBER BONDED	N'DURALL BONDED	REPLACEABLE RUBBER	PART NUMBER
4"	TS-0146-40HP	G-281 *	LLU-40-K10	LL-40-K10	HPW-40-K10	I-40-K10	TM-40-KR
4 1/2"	TS-0146-44HP	G-281 *	LLU-44-B10	LL-44-B10	HPW-44-B10	I-44-B10	TM-44-BR
5"	TS-0146-50HP	G-281 *	LLU-50-B10	LL-50-B10	HPW-50-B10	I-50-B10	TM-50-BR
5 1/2"	TS-0146-54HP	G-281 *	LLU-54-B10	LL-54-B10	HPW-54-B10	I-54-B10	TM-54-BR
5 3/4"	TS-0146-56HP	G-281 *	LLU-56-B10	LL-56-B10	HPW-56-B10	I-56-B10	TM-56-BR
6"	TS-0146-60HP	G-281 *	LLU-60-B10	LL-60-B10	HPW-60-B10	I-60-B10	TM-60-BR
6 1/4"	TS-0146-62HP	G-281 *	LLU-62-L10	LL-62-L10	HPW-62-L10	I-62-L10	TM-62-LR
6 1/2"	TS-0146-64HP	G-281 *	LLU-64-L10	LL-64-L10	HPW-64-L10	I-64-L10	TM-64-LR
6 3/4"	TS-0146-66Cr	G-281 *	LLU-66-L10	LL-66-L10	HPW-66-L10	I-66-L10	TM-66-LR
VALVES, SEATS, SPRINGS					GASKETS		
	4 WEB DESIGN	FULL OPEN	BOMCO PART NUMBER			PART NUMBER	BOMCO PART NUMBER
VALVE	TS-5-M5B5	TS-5-V1	AH0000020500		VALVE COVER GASKET	G-733	AH0501010508
SEAT	TS-5-DDB1	TS-5-S1	AH0000020500		CYLINDER HEAD GASKET	G-281	AH0501010504
SPRING	TS-5710-111	TS-5710-111	AH00000101		EXTENSION ROD BAFFLE	-	AH0501010406
INSERT (Urethane)	TS-5-WI	TS-5-FI	-				
INSERT (Rubber)	-		-				
PISTON ROD & EXTENSION ROD							
	ROD CLAMP	PISTON NUT	CLAMP TYPE PISTON ROD	SUB ROD	THREADED TYPE EXTENSION ROD	CLAMP TYPE EXTENSION ROD	
TSC PART NUMBER	TMF05-03-08	TM-NUT1	TM-146	N/A	N/A		TMF05-01-06
BOMCO PART NUMBER	AH050101051500	T507-302.00	AH0501010512				AH0501010410
FLUID END MODULE							
FLUID END MODULE STUDDED			MODULE SEAL SET		STUDS & NUTS SET		
TS-6318-0151-00			TMF05-SEALKIT		TMF05-STUDSSET		

TSC does not warrant or represent that any of such information is accurate, or that any products listed are compatible with each other. Any deviations from the OEM products should be verified as to compatibility.

TSC Manufacturing and Supply LLC, 13788 West Road, Suite 100, Houston, Texas 77041, USA  
 Tel: +1 832 456 3900 Fax: +1 832 456 3998 E-mail: sales@t-s-c.com