

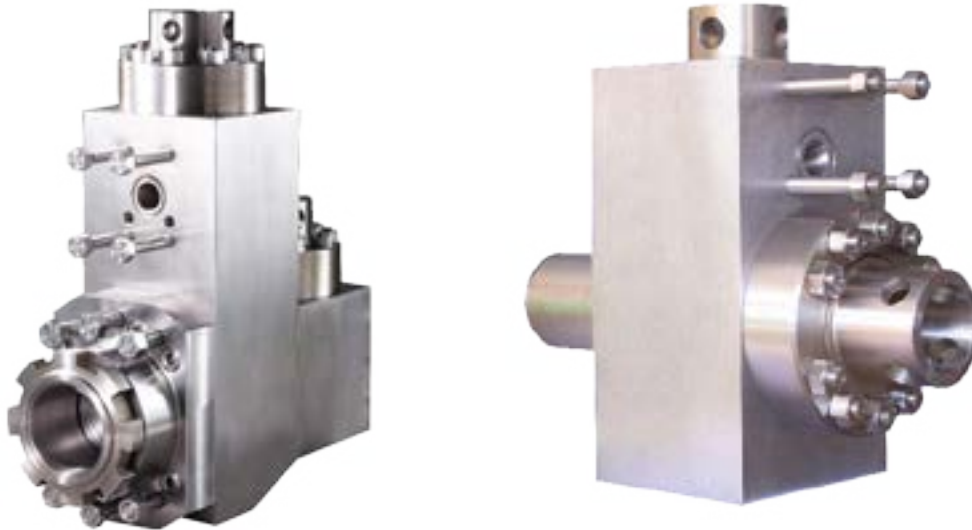
INTRODUCTION

FLUID END MODULES

Our high-strength, triple reduction, forged steel triplex fluid end modules are made from the highest alloy steel. Heat treated for long working life, they are machined to perfection and packaged for delivery with anticorrosion protection. The precision-made jewelry-like exterior finish reflects our superior quality.

Features

- Completely interchangeable with OEM.
- Premium-forged alloy steel.
- Made on CNC boring mills.
- Strict computer controlled heat treat procedures.
- Rigid inspection.
- Rated for all drilling operations up to 7,500 psi.



FLUID END EXPENDABLES

EMSCO		F-350				6-3/4 x 7	
	LINERS	LINER GASKETS	PISTONS				PISTON RUBBER
SIZE	PART NUMBER	PART NUMBER	URETHANE BONDED	RUBBER BONDED	N'DURALL BONDED	REPLACEABLE RUBBER	PART NUMBER
4"	TS-0146-40HP	G-281 *	LLU-40-K10	LL-40-K10	HPW-40-K10	I-40-K10	TM-40-KR
4 1/2"	TS-0146-44HP	G-281 *	LLU-44-B10	LL-44-B10	HPW-44-B10	I-44-B10	TM-44-BR
5"	TS-0146-50HP	G-281 *	LLU-50-B10	LL-50-B10	HPW-50-B10	I-50-B10	TM-50-BR
5 1/2"	TS-0146-54HP	G-281 *	LLU-54-B10	LL-54-B10	HPW-54-B10	I-54-B10	TM-54-BR
5 3/4"	TS-0146-56HP	G-281 *	LLU-56-B10	LL-56-B10	HPW-56-B10	I-56-B10	TM-56-BR
6"	TS-0146-60HP	G-281 *	LLU-60-B10	LL-60-B10	HPW-60-B10	I-60-B10	TM-60-BR
6 1/4"	TS-0146-62HP	G-281 *	LLU-62-L10	LL-62-L10	HPW-62-L10	I-62-L10	TM-62-LR
6 1/2"	TS-0146-64HP	G-281 *	LLU-64-L10	LL-64-L10	HPW-64-L10	I-64-L10	TM-64-LR
6 3/4"	TS-0146-66Cr	G-281 *	LLU-66-L10	LL-66-L10	HPW-66-L10	I-66-L10	TM-66-LR
VALVES, SEATS, SPRINGS					GASKETS		
	4 WEB DESIGN	3 WEB DESIGN	FULL OPEN (1)	FULL OPEN (2)		PART NUMBER	
VALVE	TS-5-M5B5	-	-	TS-5-V1	VALVE COVER GASKET	G-733 *	
SEAT	TS-5-DDB1	-	-	TS-5-S1	CYLINDER HEAD GASKET	G-281 *	
SPRING	TS-5710-111	-	-	TS-5710-111	WEAR PLATE GASKET	N/A	
INSERT (Urethane)	TS-5-WI	-	-	TS-5-FI	EXTENSION ROD SEAL	-	
INSERT (Rubber)	-	-	-	-	EXTENSION ROD BAFFLE	-	
PISTON ROD & EXTENSION ROD							
ROD CLAMP	PISTON ROD STUD	PISTON NUT	THREADED TYPE PISTON ROD	CLAMP TYPE PISTON ROD	SUB ROD	THREADED TYPE EXTENSION ROD	CLAMP TYPE EXTENSION ROD
TMF05-03-08	N/A	TM-NUT1	N/A	TM-147	N/A	N/A	TMF05-01-06
FLUID END MODULE							
FLUID END MODULE STUDED				MODULE SEAL SET		STUDS & NUTS SET	
TS-6318-0151-00				TMF05-SEALKIT		TMF05-STUDSET	

TSC does not warrant or represent that any of such information is accurate, or that any products listed are compatible with each other.
Any deviations from the OEM products should be verified as to compatibility.