

## INTRODUCTION

### FLUID END ACCESSORIES

TSC's fluid end accessories are available for most of the popular triplex mud pumps. CNC machining renders these accessories uniformly dimensional and interchangeable with OEM. The perfect exterior surface reflects our superior quality.

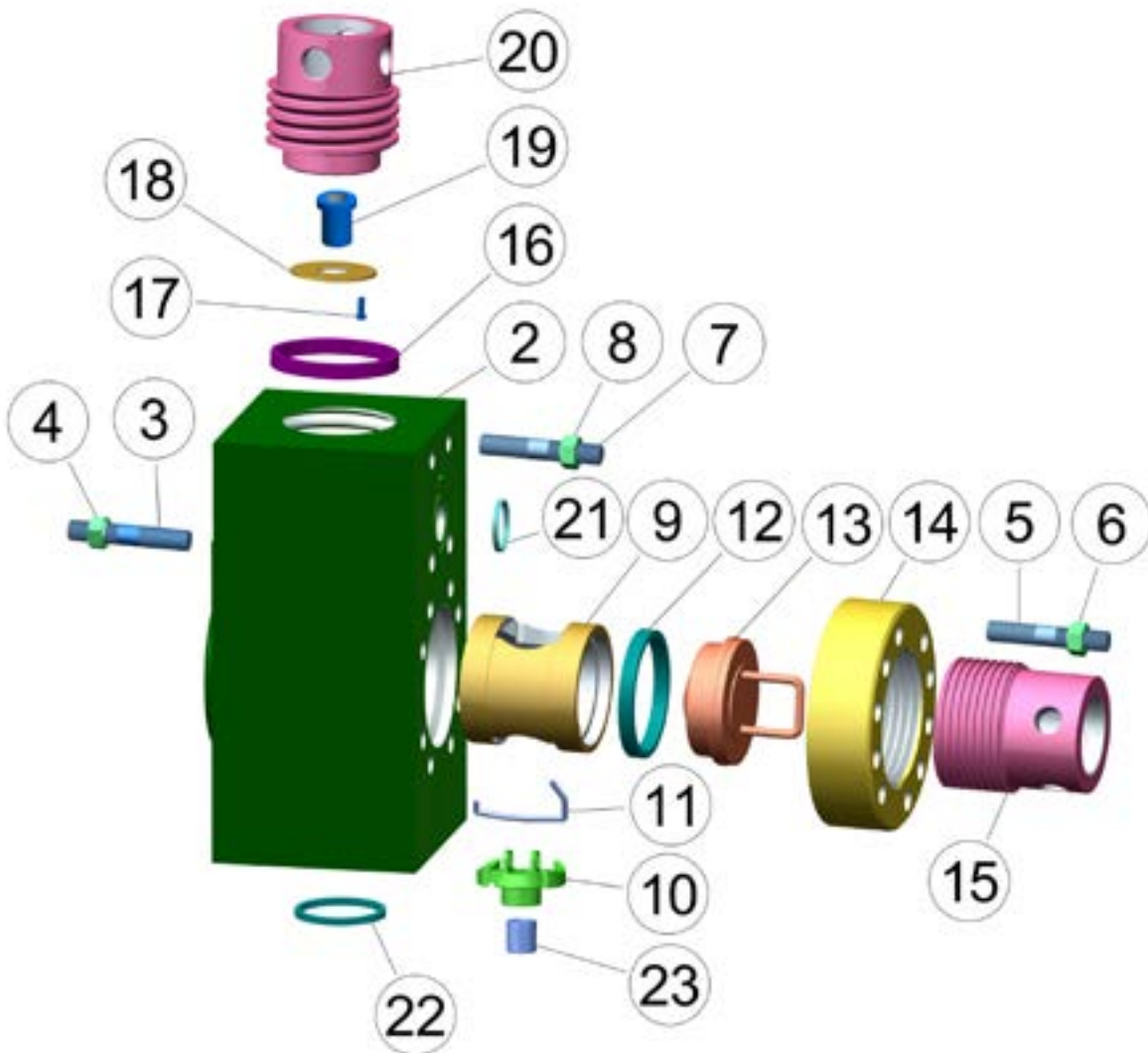
#### Associated items

- Valve and cylinder head plug.
- Valve and cylinder head thread ring.
- Valve and cylinder head lock.
- Valve guide.
- Stud and nut.
- Specialty items.



### FLUID END MODULE & ACCESSORIES

**CONTINENTAL EMSCO F-800, F-1000**  
**TSC Manufacturing and Supply, LLC.**



TSC Manufacturing and Supply LLC, 13788 West Road, Suite 100, Houston, Texas 77041, USA  
Tel: +1 832 456 3900 Fax: +1 832 456 3998 E-mail: sales@t-s-c.com

**FLUID END MODULE & ACCESSORIES****CONTINENTAL EMSCO F-800, F-1000**

ITEM	PART NUMBER	DESCRIPTION	QTY/PUMP
	TS-EMSFEF1000CA	FLUID END MODULE COMPLETE ASSEMBLY (INCLUDES ITEM 2-23)	3
1	TS-6999-0086-02	FLUID END MODULE STUDDED (INCLUDES ITEM 2-8)	3
2	TS-6999-0087-02	FLUID END MODULE (UNSTUDDDED)	3
3	TS-7507-2205-00	STUD FRAME	18
4	TS-7601-0630-17	NUT (FOR ABOVE)	18
5	TS-7507-2150-00	STUD, THREADED RING	30
6	TS-7601-0630-28	NUT (FOR ABOVE)	30
7	TS-7507-2108-00	STUD, DISCHARGE MANIFOLD	12
8	TS-7601-0630-24	NUT (FOR ABOVE)	12
9	TS-6319-0026-00	CAGE, LINER	3
10	TS-6319-0087-00	GUIDE, LOWER VALVE (WITH BUSHING)	3
11	TS-6319-0089-00	CLIP, LOCKING (FOR LOWER VALVE GUIDE)	3
12	TS-7602-2200-32	GASKET, LINER/ CYLINDER HEAD (G-282)	6
13	TS-6319-0031-00	PLUG, CYLINDER HEAD	3
14	TS-6999-0089-00	RING, THREADED CYLINDER HEAD	3
15	TS-6319-0090-00	CAP, THREADED CYLINDER HEAD	3
16	TS-6319-0076-00	GASKET, VALVE COVER (G-740)	3
17	TS-7501-0051-00	SCREW, RETAINER (UPPER)	12
18	TS-6397-0603-00	RETAINER PLATE (UPPER)	3
19	TS-6397-0575-00	GUIDE, UPPER VALVE	3
20	TS-6319-0027-00	COVER, VALVE POT	3
21	TS-7602-1610-46	GASKET, DISCHARGE MANIFOLD	3
22	TS-7602-1600-61	GASKET, SUCTION MANIFOLD	3
23	TS-6316-0096-00	BUSHING, LOWER VALVE GUIDE	3
24	TMF10-STUDSET	F-800/1000 STUDS AND NUTS SET(INCLUDES 6 PCS TS-7507-2205-00, 6 PCS TS-7601-0630-17, 10 PCS TS-7507-2150-00, 10 PCS TS-7601-0630- 28, 4 PCS TS-7507-2108-00, 4 PCS TS-7601-0630-24)	3
25	TMF10-SEALKIT	F-800/1000 MODULE SEAL KIT (INCLUDES ONE G-282, ONE G-740, ONE TS-7602-1610-46, ONE TS- 7602-1600-61)	3

TSC does not warrant or represent that any of such information is accurate, or that any products listed are compatible with each other.  
Any deviations from the OEM products should be verified as to compatibility.