

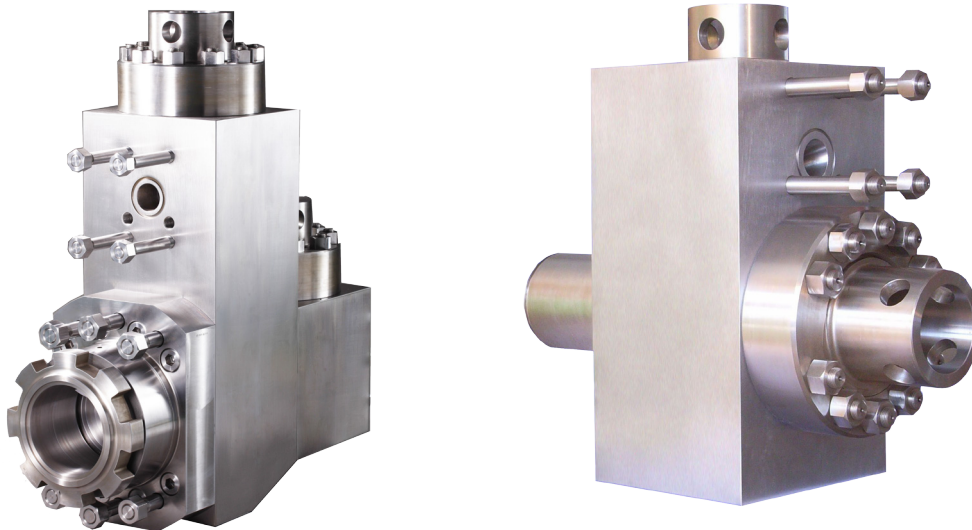
INTRODUCTION

FLUID END MODULES

Our high-strength, triple reduction, forged steel triplex fluid end modules are made from the highest alloy steel. Heat treated for long working life, they are machined to perfection and packaged for delivery with anticorrosion protection. The precision-made jewelry-like exterior finish reflects our superior quality.

Features

- Completely interchangeable with OEM.
- Premium-forged alloy steel.
- Made on CNC boring mills.
- Strict computer controlled heat treat procedures.
- Rigid inspection.
- Rated for all drilling operations up to 7,500 psi.



TSC Manufacturing and Supply LLC, 13788 West Road, Suite 100, Houston, Texas 77041, USA
Tel: +1 832 456 3900 Fax: +1 832 456 3998 E-mail: sales@t-s-c.com

INTRODUCTION

FLUID END ACCESSORIES

TSC's fluid end accessories are available for most of the popular triplex mud pumps. CNC machining renders these accessories uniformly dimensional and interchangeable with OEM. The perfect exterior surface reflects our superior quality.

Associated items

- Valve and cylinder head plug.
- Valve and cylinder head thread ring.
- Valve and cylinder head lock.
- Valve guide.
- Stud and nut.
- Specialty items.

