

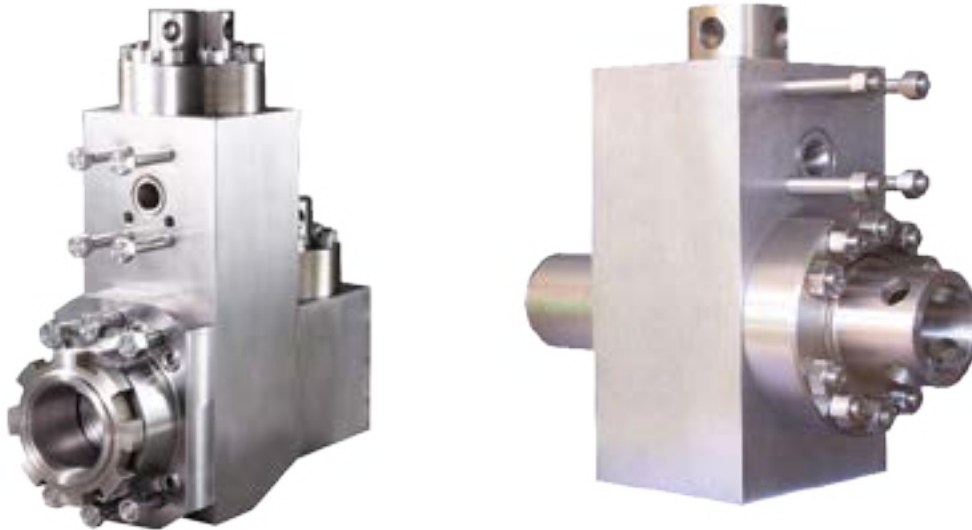
## INTRODUCTION

### FLUID END MODULES

Our high-strength, triple reduction, forged steel triplex fluid end modules are made from the highest alloy steel. Heat treated for long working life, they are machined to perfection and packaged for delivery with anticorrosion protection. The precision-made jewelry-like exterior finish reflects our superior quality.

#### Features

- Completely interchangeable with OEM.
- Premium-forged alloy steel.
- Made on CNC boring mills.
- Strict computer controlled heat treat procedures.
- Rigid inspection.
- Rated for all drilling operations up to 7,500 psi.



TSC Manufacturing and Supply LLC, 13788 West Road, Suite 100, Houston, Texas 77041, USA  
Tel: +1 832 456 3900 Fax: +1 832 456 3998 E-mail: sales@t-s-c.com

# FLUID END EXPENDABLES

**HONGHUA**

**HHF-1600**

**7 x 12**

	LINERS	ZIRCONIA LINERS	LINER GASKETS	PISTONS				PISTON RUBBERS
SIZE	TSC PART NUMBER	PART NUMBER	TSC PART NUMBER	URETHANE BONDED	RUBBER BONDED	N'DURALL BONDED	REPLACEABLE RUBBER	PART NUMBER
4"	TS-2145-40HP	TS-07499400	G-800 *	LLU-40-K15	LL-40-K15	HPW-40-K15	I-40-K15	TM-40-KR
4 1/2"	TS-2145-44HP	TS-07499450	G-800 *	LLU-44-B15	LL-44-B15	HPW-44-B15	I-44-B15	TM-44-BR
5"	TS-2145-50HP	TS-07499500	G-800 *	LLU-50-B15	LL-50-B15	HPW-50-B15	I-50-B15	TM-50-BR
5 1/2"	TS-2145-54HP	TS-07499550	G-800 *	LLU-54-B15	LL-54-B15	HPW-54-B15	I-54-B15	TM-54-BR
5 3/4"	TS-2145-56HP	TS-07499575	G-800 *	LLU-56-B15	LL-56-B15	HPW-56-B15	I-56-B15	TM-56-BR
6"	TS-2145-60HP	TS-07499600	G-800 *	LLU-60-B15	LL-60-B15	HPW-60-B15	I-60-B15	TM-60-BR
6 1/4"	TS-2145-62HP	TS-07499625	G-800 *	LLU-62-L15	LL-62-L15	HPW-62-L15	I-62-L15	TM-62-LR
6 1/2"	TS-2145-64HP	TS-07499650	G-800 *	LLU-64-L15	LL-64-L15	HPW-64-L15	I-64-L15	TM-64-LR
6 3/4"	TS-2145-66HP	TS-07499675	G-800 *	LLU-66-L15	LL-66-L15	HPW-66-L15	I-66-L15	TM-66-LR
7"	TS-2145-70HP	TS-07499700	G-800 *	LLU-70-L15	LL-70-L15	HPW-70-L15	I-70-L15	TM-70-LR
<b>HONGHUA PART NUMBER</b>	11-3161-0521~26	11-3161-0514					11-3161-0524-00	
<b>VALVES, SEATS, SPRINGS</b>				<b>GASKETS</b>				
	<b>4 WEB DESIGN</b>	<b>FULL OPEN</b>	<b>HONGHUA PART NUMBER</b>			<b>TSC PART NUMBER</b>	<b>HONGHUA PART NUMBER</b>	
<b>VALVE</b>	TS-7-EEF	TS-7-V1	11-3161-0511-01	<b>VALVE COVER GASKET</b>		G-741 *	11-3161-0512	
<b>SEAT</b>	TS-7-DDB1	TS-7-S1	11-3161-0511-06	<b>CYLINDER HEAD GASKET</b>		G-801 *	11-3161-0508	
<b>SPRING</b>	TS-5710-115	TS-5710-115L	11-3161-0510	<b>WEAR PLATE GASKET</b>		G-800 *	11-3161-0514	
<b>INSERT (Urethane)</b>	TS-7-WI	TS-7-FI	11-3161-0511-05					
<b>PISTON ROD &amp; EXTENSION ROD</b>								
	<b>ROD CLAMP</b>	<b>PISTON NUT</b>	<b>PISTON ROD</b>	<b>EXTENSION ROD</b>				
TSC PART NUMBER	TMFB6-03-08	TM-NUT	TM-2145	TMF16-01-06				
HONGHUA PART NUMBER	11-3161-0522-00	11-3161-0532-00	11-3161-0518	11-3161-0412				
<b>FLUID END MODULE</b>								
	<b>FLUID END MODULE STUDDER</b>	<b>MODULE SEAL SET</b>		<b>STUDS &amp; NUTS SET</b>				
TSC PART NUMBER	TS-6316-0357-00B	TMFB6-SEALKIT		TMBJ16-STUDSET				
HONGHUA PART NUMBER	11-3161-0501-00							

TSC does not warrant or represent that any of such information is accurate, or that any products listed are compatible with each other. Any deviations from the OEM products should be verified as to compatibility.

TSC Manufacturing and Supply LLC, 13788 West Road, Suite 100, Houston, Texas 77041, USA  
 Tel: +1 832 456 3900 Fax: +1 832 456 3998 E-mail: sales@t-s-c.com