

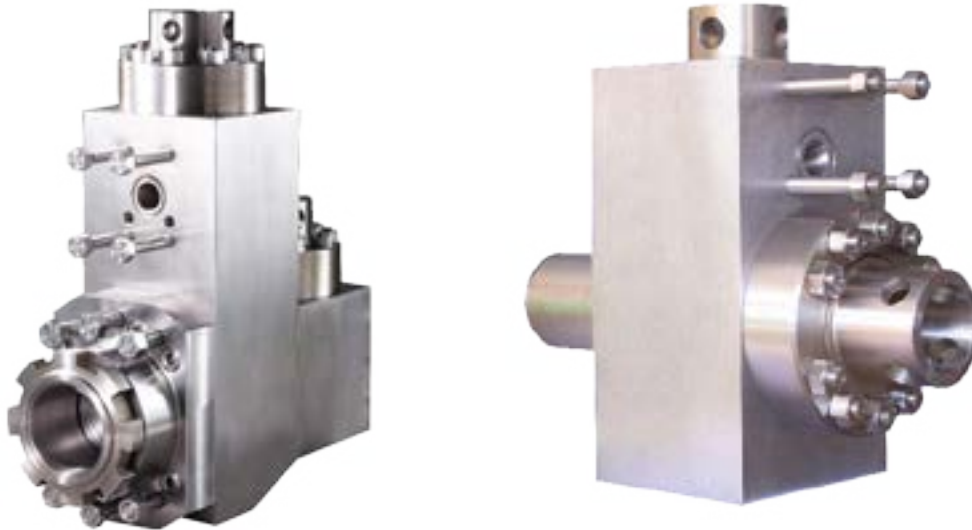
INTRODUCTION

FLUID END MODULES

Our high-strength, triple reduction, forged steel triplex fluid end modules are made from the highest alloy steel. Heat treated for long working life, they are machined to perfection and packaged for delivery with anticorrosion protection. The precision-made jewelry-like exterior finish reflects our superior quality.

Features

- Completely interchangeable with OEM.
- Premium-forged alloy steel.
- Made on CNC boring mills.
- Strict computer controlled heat treat procedures.
- Rigid inspection.
- Rated for all drilling operations up to 7,500 psi.



FLUID END EXPENDABLES

NATIONAL

JWS-340

4-1/2 x 5

LINERS		LINER GASKETS		PISTONS				PISTON RUBBERS
SIZE	PART NUMBER	PART NUMBER	URETHANE BONDED	RUBBER BONDED	N'DURALL BONDED	REPLACEABLE RUBBER	PART NUMBER	
3-1/2"	TS-0240-34HP	G-925C	LLU-34-K10	LL-34-K10	HPW-34-K10	I-34-K10	TM-34-KR	
4"	TS-0240-40HP	G-925C	LLU-40-K10	LL-40-K10	HPW-40-K10	I-40-K10	TM-40-KR	
4-1/2"	TS-0240-44Cr	G-925C	LLU-44-B10	LL-44-B10	HPW-44-B10	I-44-B10	TM-44-BR	
PLUNGER	STUFFING BOX	ADJUSTING NUT	GLAND	ADAPTER	LUBE RING	WASHER	PACKING	
2-3/4"	TS-1717829-1	TS-1717740-2	TS-1717762-2	TS-1717782-2	TS-1717772-2	TS-1717792-2	TS-6400035	
3	TS-17179011	TS-1717902	TS-1712090	-	TS-1717331-2	TS-1717321-2	TS-6423002	
3-1/2"	TS-1717835-1	TS-1717741-2	TS-1717765-2	TS-1717785-2	TS-1717775-2	TS-1717795-2	TS-6400038	
4"	TS-1717837-1	TS-1717743-2	TS-1717767-2	TS-1717787-2	TS-1717777-2	TS-1717797-2	TS-6400040	
VALVES, SEATS, SPRINGS					GASKETS			
	4 WEB DESIGN	3 WEB DESIGN	FULL OPEN (1)	FULL OPEN (2)		PART NUMBER		
VALVE	-	-	TS-1575M	TS-4-V7	VALVE COVER GASKET	G-1718265		
SEAT SUCTION	-	-	TS-1571M	TS-4-S17	CYLINDER HEAD GASKET	-		
SEAT DISCHARGE	-	-	TS-1572M	TS-4-S18	WEAR PLATE GASKET	-		
SUCTION SPRING	-	-	TS-1712211	TS-19000-6	EXTENSION ROD SEAL	-		
DISCHARGE SPRING	-	-	TS-1712206	TS-5710-118				
INSERT (Urethane)	-	-	TS-1577M	TS-4-FIA	EXTENSION ROD BAFFLE	TS-1717016		
INSERT (Rubber)	-	-	-	-		-		
PISTON ROD & EXTENSION ROD								
ROD CLAMP	PISTON ROD STUD	PISTON NUT	THREADED TYPE PISTON ROD	CLAMP TYPE PISTON ROD	SUB ROD	THREADED TYPE EXTENSION ROD	CLAMP TYPE EXTENSION ROD	
TM165-03-08	N/A	TM-NUT1	N/A	TM-165-A	TM-165-B	N/A	TM-165C	
FLUID END MODULE								
FLUID END MODULE				MODULE SEAL SET		STUDS & NUTS SET		
TS-171719612				TMJWS34-SEALKIT		TMJWS34-STUDSET		

TSC does not warrant or represent that any of such information is accurate, or that any products listed are compatible with each other. Any deviations from the OEM products should be verified as to compatibility.

TSC Manufacturing and Supply LLC, 13788 West Road, Suite 100, Houston, Texas 77041, USA
 Tel: +1 832 456 3900 Fax: +1 832 456 3998 E-mail: sales@t-s-c.com

