

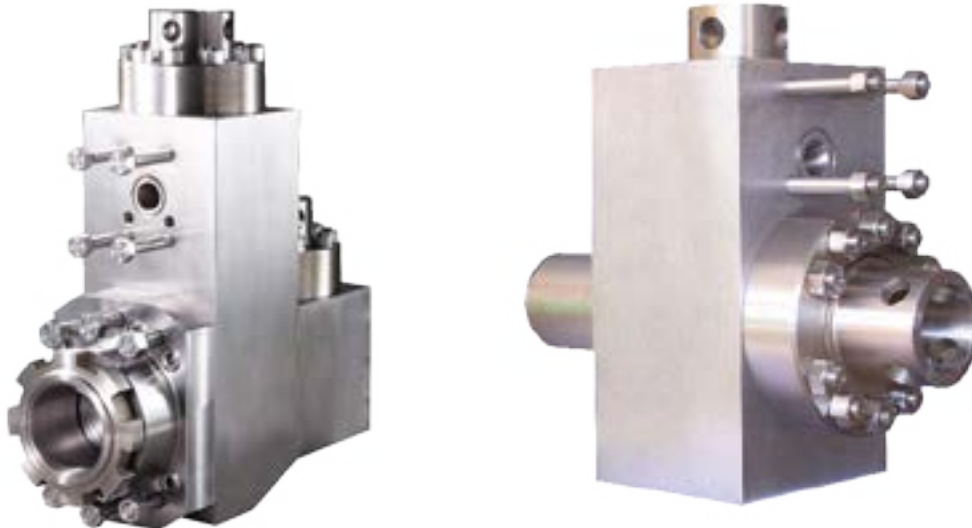
## INTRODUCTION

### FLUID END MODULES

Our high-strength, triple reduction, forged steel triplex fluid end modules are made from the highest alloy steel. Heat treated for long working life, they are machined to perfection and packaged for delivery with anticorrosion protection. The precision-made jewelry-like exterior finish reflects our superior quality.

#### Features

- Completely interchangeable with OEM.
- Premium-forged alloy steel.
- Made on CNC boring mills.
- Strict computer controlled heat treat procedures.
- Rigid inspection.
- Rated for all drilling operations up to 7,500 psi.



**FLUID END EXPENDABLES**

**GARDNER DENVER**

**PZ-11 HP(PZL) (7500 PSI)**

**7 x 11**

	LINERS		ZIRCONIA LINERS	LINER GASKETS	PISTONS				PISTON RUBBER
SIZE	PART NUMBER	PART NUMBER	PART NUMBER	URETHANE BONDED	RUBBER BONDED	N'DURALL BONDED	REPLACEABLE RUBBER	PART NUMBER	
4 1/2"	TS-1197-44HP	TS-07561450	G-756 *	LLU-44-B15	LL-44-B15	HPW-44-B15	I-44-B15	TM-44-BR	
5"	TS-1197-50HP	TS-07561500	G-756 *	LLU-50-B15	LL-50-B15	HPW-50-B15	I-50-B15	TM-50-BR	
5 1/2"	TS-1197-54HP	TS-07561550	G-756 *	LLU-54-B15	LL-54-B15	HPW-54-B15	I-54-B15	TM-54-BR	
5 3/4"	TS-1197-56HP	TS-07561575	G-756 *	LLU-56-B15	LL-56-B15	HPW-56-B15	I-56-B15	TM-56-BR	
6"	TS-1197-60HP	TS-07561600	G-756 *	LLU-60-B15	LL-60-B15	HPW-60-B15	I-60-B15	TM-60-BR	
6 1/4"	TS-1197-62HP	TS-07561625	G-757 *	LLU-62-L15	LL-62-L15	HPW-62-L15	I-62-L15	TM-62-LR	
6 1/2"	TS-1197-64HP	TS-07561650	G-757 *	LLU-64-L15	LL-64-L15	HPW-64-L15	I-64-L15	TM-64-LR	
6 3/4"	TS-1197-66HP	TS-07561675	G-757 *	LLU-66-L15	LL-66-L15	HPW-66-L15	I-66-L15	TM-66-LR	
7"	TS-1197-70HP	TS-07561700	G-757 *	LLU-70-L15	LL-70-L15	HPW-70-L15	I-70-L15	TM-70-LR	
VALVES, SEATS, SPRINGS						GASKETS			
	4 WEB DESIGN	3 WEB DESIGN	FULL OPEN (1)	FULL OPEN (2)		PART NUMBER			
VALVE	TS-6-EH	-	TS-0995M	TS-6-V1	VALVE COVER GASKET	TS-309PZL316			
SEAT	TS-6-ADDB6	-	TS-1380M	TS-6-S6	CYLINDER HEAD GASKET	-			
SPRING	TS-5710-115	-	-	TS-5710-115	WEAR PLATE GASKET	TS-303PZL316			
INSERT (Urethane)	TS-6-WI	-	TS-6-MI	TS-6-FI	EXTENSION ROD SEAL	TS-2011872-2			
INSERT (Rubber)	TS-6-WR	-	-	TS-6-FR	EXTENSION ROD BAFFLE	TS-PZ840			
PISTON ROD & EXTENSION ROD									
ROD CLAMP	PISTON ROD STUD	PISTON NUT	TWO-PIECE PISTON ROD FRONT	CLAMP TYPE PISTON ROD	TWO-PIECE PISTON ROD BACK	THREADED TYPE EXTENSION ROD	CLAMP TYPE EXTENSION ROD		
TMPZ11-03-08	TS-PP1005294	TM-NUT	TS-PP1005290	TM-200	TS-PP1005292	-	TMPZ11-01-06		
FLUID END MODULE									
FLUID END MODULE STUDED				MODULE SEAL SET		STUDS & NUTS SET			
TS-300PZL2039				TMPZ11HP-SEALKIT		TMPZ11HP-STUDSET			

TSC does not warrant or represent that any of such information is accurate, or that any products listed are compatible with each other. Any deviations from the OEM products should be verified as to compatibility.

TSC Manufacturing and Supply LLC, 13788 West Road, Suite 100, Houston, Texas 77041, USA  
 Tel: +1 832 456 3900 Fax: +1 832 456 3998 E-mail: sales@t-s-c.com