

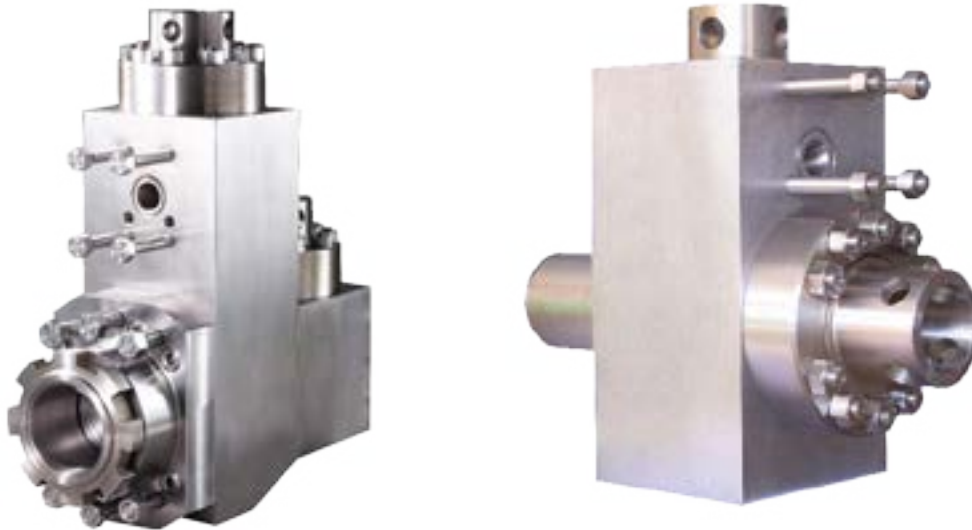
## INTRODUCTION

### FLUID END MODULES

Our high-strength, triple reduction, forged steel triplex fluid end modules are made from the highest alloy steel. Heat treated for long working life, they are machined to perfection and packaged for delivery with anticorrosion protection. The precision-made jewelry-like exterior finish reflects our superior quality.

#### Features

- Completely interchangeable with OEM.
- Premium-forged alloy steel.
- Made on CNC boring mills.
- Strict computer controlled heat treat procedures.
- Rigid inspection.
- Rated for all drilling operations up to 7,500 psi.



## FLUID END EXPENDABLES

**GARDNER DENVER**

**PZ-8**

**7 x 8**

LINERS		ZIRCONIA LINERS	LINER GASKETS	PISTONS				PISTON RUBBER
SIZE	PART NUMBER	PART NUMBER	PART NUMBER	URETHANE BONDED	RUBBER BONDED	N'DURALL BONDED	REPLACEABLE RUBBER	PART NUMBER
4"	TS-1191-40HP	TS-07493400	G-692 *	LLU-40-K15	LL-40-K15	HPW-40-K15	I-40-K15	TM-40-KR
4 1/2"	TS-1191-44HP	TS-07493450	G-692 *	LLU-44-B15	LL-44-B15	HPW-44-B15	I-44-B15	TM-44-BR
5"	TS-1191-50HP	TS-07493500	G-692 *	LLU-50-B15	LL-50-B15	HPW-50-B15	I-50-B15	TM-50-BR
5 1/2"	TS-1191-54HP	TS-07493550	G-692 *	LLU-54-B15	LL-54-B15	HPW-54-B15	I-54-B15	TM-54-BR
5 3/4"	TS-1191-56HP	TS-07493575	G-692 *	LLU-56-B15	LL-56-B15	HPW-56-B15	I-56-B15	TM-56-BR
6"	TS-1191-60HP	TS-07493600	G-692 *	LLU-60-B15	LL-60-B15	HPW-60-B15	I-60-B15	TM-60-BR
6 1/4"	TS-1191-62HP	TS-07493625	G-692 *	LLU-62-L15	LL-62-L15	HPW-62-L15	I-62-L15	TM-62-LR
6 1/2"	TS-1191-64HP	TS-07493650	G-692 *	LLU-64-L15	LL-64-L15	HPW-64-L15	I-64-L15	TM-64-LR
6 3/4"	TS-1191-66HP	TS-07493675	G-692 *	LLU-66-L15	LL-66-L15	HPW-66-L15	I-66-L15	TM-66-LR
7"	TS-1191-70Cr		G-692 *	LLU-70-L15	LL-70-L15	HPW-70-L15	I-70-L15	TM-70-LR
VALVES, SEATS, SPRINGS						GASKETS		
	4 WEB DESIGN	3 WEB DESIGN	FULL OPEN (1)	FULL OPEN (2)		PART NUMBER		
VALVE	TS-7-EEF	TS-202PZL482A	TS-0985M	TS-7-V1	VALVE COVER GASKET	G-749 *		
SEAT	TS-7-DDB1	TS-202PZL039	TS-1370M	TS-7-S1	CYLINDER HEAD GASKET	G-749 *		
SPRING	TS-5710-115	TS-78H44	TS-0702M	TS-5710-115L	WEAR PLATE GASKET	G-758*		
INSERT (Urethane)	TS-7-WI	TS-201PZL106	TS-7-MI	TS-7-FI	EXTENSION ROD SEAL	TS-2011872-2		
INSERT (Rubber)	TS-7-WR	TS-202PZL106	-	-	EXTENSION ROD BAFFLE	TS-PZ840		
PISTON ROD & EXTENSION ROD								
ROD CLAMP	PISTON ROD STUD	PISTON NUT	THREADED TYPE PISTON ROD	CLAMP TYPE PISTON ROD	SUB ROD	THREADED TYPE EXTENSION ROD	CLAMP TYPE EXTENSION ROD	
TMPZ9-03-08	N/A	TM-NUT	TM-202	TM-191	N/A	TMPZ7-01-06T	TMPZ8-01-06	
FLUID END MODULE								
FLUID END MODULE STUDED			MODULE SEAL SET			STUDS & NUTS SET		
TS-205PZL029D			TMPZ9-SEALKIT			TMPZ9-STUDSET		

TSC does not warrant or represent that any of such information is accurate, or that any products listed are compatible with each other. Any deviations from the OEM products should be verified as to compatibility.

TSC Manufacturing and Supply LLC, 13788 West Road, Suite 100, Houston, Texas 77041, USA  
 Tel: +1 832 456 3900 Fax: +1 832 456 3998 E-mail: sales@t-s-c.com

