

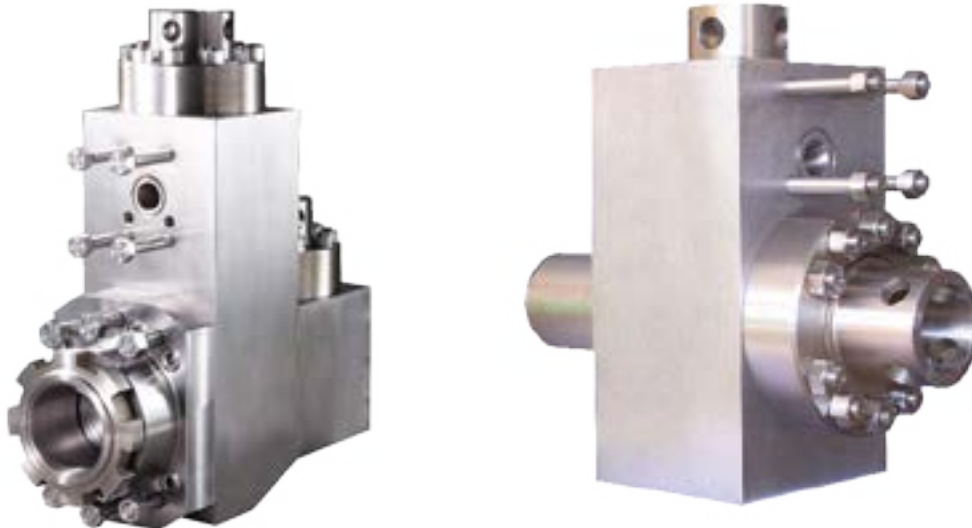
## INTRODUCTION

### FLUID END MODULES

Our high-strength, triple reduction, forged steel triplex fluid end modules are made from the highest alloy steel. Heat treated for long working life, they are machined to perfection and packaged for delivery with anticorrosion protection. The precision-made jewelry-like exterior finish reflects our superior quality.

#### Features

- Completely interchangeable with OEM.
- Premium-forged alloy steel.
- Made on CNC boring mills.
- Strict computer controlled heat treat procedures.
- Rigid inspection.
- Rated for all drilling operations up to 7,500 psi.



## FLUID END EXPENDABLES

IDECO

T-1300

7-1/2 x 12

SIZE	LINERS	ZIRCONIA LINERS	LINER GASKETS	PISTONS				PISTON RUBBERS
	PART NUMBER	PART NUMBER	PART NUMBER	URETHANE BONDED	RUBBER BONDED	N'DURALL BONDED	REPLACEABLE RUBBER	PART NUMBER
4"	TS-0233-40HP	TS-07507400	G-782 *	LLU-40-K15	LL-40-K15	HPW-40-K15	I-40-K15	TM-40-KR
4 1/2"	TS-0233-44HP	TS-07507450	G-782 *	LLU-44-B15	LL-44-B15	HPW-44-B15	I-44-B15	TM-44-BR
5"	TS-0233-50HP	TS-07507500	G-782 *	LLU-50-B15	LL-50-B15	HPW-50-B15	I-50-B15	TM-50-BR
5 1/2"	TS-0233-54HP	TS-07507550	G-782 *	LLU-54-B15	LL-54-B15	HPW-54-B15	I-54-B15	TM-54-BR
5 3/4"	TS-0233-56HP	TS-07507575	G-782 *	LLU-56-B15	LL-56-B15	HPW-56-B15	I-56-B15	TM-56-BR
6"	TS-0233-60HP	TS-07507600	G-782 *	LLU-60-B15	LL-60-B15	HPW-60-B15	I-60-B15	TM-60-BR
6 1/4"	TS-0233-62HP	TS-07507625	G-782 *	LLU-62-L15	LL-62-L15	HPW-62-L15	I-62-L15	TM-62-LR
6 1/2"	TS-0233-64HP	TS-07507650	G-782 *	LLU-64-L15	LL-64-L15	HPW-64-L15	I-64-L15	TM-64-LR
6 3/4"	TS-0233-66HP	TS-07507675	G-782 *	LLU-66-L15	LL-66-L15	HPW-66-L15	I-66-L15	TM-66-LR
7"	TS-0233-70HP	TS-07507700	G-782 *	LLU-70-L15	LL-70-L15	HPW-70-L15	I-70-L15	TM-70-LR
7-1/4"	TS-0233-72HP	TS-07507725	G-782 *	LLU-72-L15	LL-72-L15	HPW-72-L15	I-72-L15	TM-72-LR
7-1/2"	TS-0233-74HP	TS-07507750	G-782 *	LLU-74-L15	LL-74-L15	HPW-74-L15	I-74-L15	TM-74-LR
<b>VALVES, SEATS, SPRINGS</b>						<b>GASKETS</b>		
	<b>4 WEB DESIGN</b>	<b>3 WEB DESIGN</b>	<b>FULL OPEN (1)</b>	<b>FULL OPEN (2)</b>		<b>PART NUMBER</b>		
<b>VALVE</b>	TS-7-EEF	TS-202482	TS-0985M	TS-7-V1	<b>VALVE COVER GASKET</b>	G-782 *		
<b>SEAT</b>	TS-7-DDB1	TS-202039	TS-1370M	TS-7-S1	<b>CYLINDER HEAD GASKET</b>	G-782 *		
<b>SPRING</b>	TS-5710-115	-	TS-0702M	TS-5710-115L	<b>WEAR PLATE GASKET</b>	TS-2930-10 *		
<b>INSERT (Urethane)</b>	TS-7-WI	TS-201PZL106	TS-7-MI	TS-7-FI	<b>EXTENSION ROD SEAL</b>	TS-IP-804		
<b>INSERT (Rubber)</b>	TS-7-WR	TS-202PZL106	-	-	<b>EXTENSION ROD BAFFLE</b>	TS-450-06-12		
<b>PISTON ROD &amp; EXTENSION ROD</b>								
<b>ROD CLAMP</b>	<b>PISTON ROD STUD</b>	<b>PISTON NUT</b>	<b>THREADED TYPE PISTON ROD</b>	<b>CLAMP TYPE PISTON ROD</b>	<b>SUB ROD</b>	<b>THREADED TYPE EXTENSION ROD</b>	<b>CLAMP TYPE EXTENSION ROD</b>	
TMT16-03-08	N/A	TM-NUT	N/A	TM-233	N/A	N/A	TMT16-01-06	
<b>FLUID END MODULE</b>								
<b>FLUID END MODULE STUDDED</b>				<b>MODULE SEAL SET</b>		<b>STUDS &amp; NUTS SET</b>		
TS-551-122-01				TMT16-SEALKIT		TMT16-STUDSET		

TSC does not warrant or represent that any of such information is accurate, or that any products listed are compatible with each other. Any deviations from the OEM products should be verified as to compatibility.

TSC Manufacturing and Supply LLC, 13788 West Road, Suite 100, Houston, Texas 77041, USA  
 Tel: +1 832 456 3900 Fax: +1 832 456 3998 E-mail: sales@t-s-c.com