

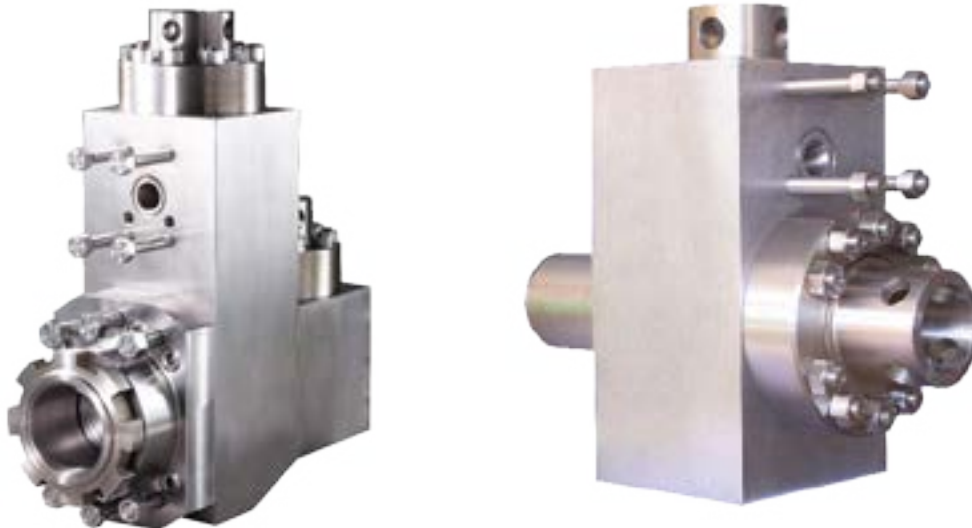
INTRODUCTION

FLUID END MODULES

Our high-strength, triple reduction, forged steel triplex fluid end modules are made from the highest alloy steel. Heat treated for long working life, they are machined to perfection and packaged for delivery with anticorrosion protection. The precision-made jewelry-like exterior finish reflects our superior quality.

Features

- Completely interchangeable with OEM.
- Premium-forged alloy steel.
- Made on CNC boring mills.
- Strict computer controlled heat treat procedures.
- Rigid inspection.
- Rated for all drilling operations up to 7,500 psi.



TSC Manufacturing and Supply LLC, 13788 West Road, Suite 100, Houston, Texas 77041, USA
Tel: +1 832 456 3900 Fax: +1 832 456 3998 E-mail: sales@t-s-c.com

FLUID END EXPENDABLES

TSC

WF1300C

7 x 10

	LINERS	ZIRCONIA LINER	LINER GASKETS	PISTONS				PISTON RUBBERS
SIZE	PART NUMBER	PART NUMBER	PART NUMBER	URETHANE BONDED	RUBBER BONDED	N'DURALL BONDED	REPLACEABLE RUBBER	PART NUMBER
4"	TS-0148-40HPA	TS-07495400A	G-282 *	LLU-40-K15	LL-40-K15	HPW-40-K15	I-40-K15	TM-40-KR
4 1/2"	TS-0148-44HPA	TS-07495450A	G-282 *	LLU-44-B15	LL-44-B15	HPW-44-B15	I-44-B15	TM-44-BR
5"	TS-0148-50HPA	TS-07495500A	G-282 *	LLU-50-B15	LL-50-B15	HPW-50-B15	I-50-B15	TM-50-BR
5 1/2"	TS-0148-54HPA	TS-07495550A	G-282 *	LLU-54-B15	LL-54-B15	HPW-54-B15	I-54-B15	TM-54-BR
5 3/4"	TS-0148-56HPA	TS-07499575A	G-282 *	LLU-56-B15	LL-56-B15	HPW-56-B15	I-56-B15	TM-56-BR
6"	TS-0148-60HPA	TS-07495600A	G-282 *	LLU-60-B15	LL-60-B15	HPW-60-B15	I-60-B15	TM-60-BR
6 1/4"	TS-0148-62HPA	TS-07495625A	G-282 *	LLU-62-L15	LL-62-L15	HPW-62-L15	I-62-L15	TM-62-LR
6 1/2"	TS-0148-64HPA	TS-07495650A	G-282 *	LLU-64-L15	LL-64-L15	HPW-64-L15	I-64-L15	TM-64-LR
6 3/4"	TS-0148-66HPA	TS-07495675A	G-282 *	LLU-66-L15	LL-66-L15	HPW-66-L15	I-66-L15	TM-66-LR
7"	TS-0148-70CrA		G-282 *	LLU-70-L15	LL-70-L15	HPW-70-L15	I-70-L15	TM-70-LR
VALVES, SEATS, SPRINGS						GASKETS		
	4 WEB DESIGN	3 WEB DESIGN	FULL OPEN (1)	FULL OPEN (2)				PART NUMBER
VALVE	TS-6-EH	-	TS-0995M	TS-6-V1	VALVE COVER GASKET			G-740 *
SEAT	TS-6-ADDB6	-	TS-1380M	TS-6-S6	CYLINDER HEAD GASKET			G-282 *
SPRING	TS-5710-115	-	-	TS-5710-115L	WEAR PLATE GASKET			N/A
INSERT (Urethane)	TS-6-WI	-	TS-6-MI	TS-6-FI	EXTENSION ROD SEAL			TS-2011872
INSERT (Rubber)	-	-	-	-	EXTENSION ROD BAFFLE			TS-720-5803
PISTON ROD & EXTENSION ROD								
ROD CLAMP	PISTON ROD STUD	PISTON NUT	THREADED TYPE PISTON ROD	CLAMP TYPE PISTON ROD	SUB ROD	THREADED TYPE EXTENSION ROD		CLAMP TYPE EXTENSION ROD
TMP11-03-08	N/A	TM-NUT	N/A	TM-200	N/A	N/A		TMP11-01-06C
FLUID END MODULE								
FLUID END MODULE STUDED				MODULE SEAL SET		STUDS & NUTS SET		
TS-6999-0086-02				TMF10-SEALKIT		TMF10-STUDSET		

TSC does not warrant or represent that any of such information is accurate, or that any products listed are compatible with each other.
Any deviations from the OEM products should be verified as to compatibility.

TSC Manufacturing and Supply LLC, 13788 West Road, Suite 100, Houston, Texas 77041, USA
Tel: +1 832 456 3900 Fax: +1 832 456 3998 E-mail: sales@t-s-c.com