

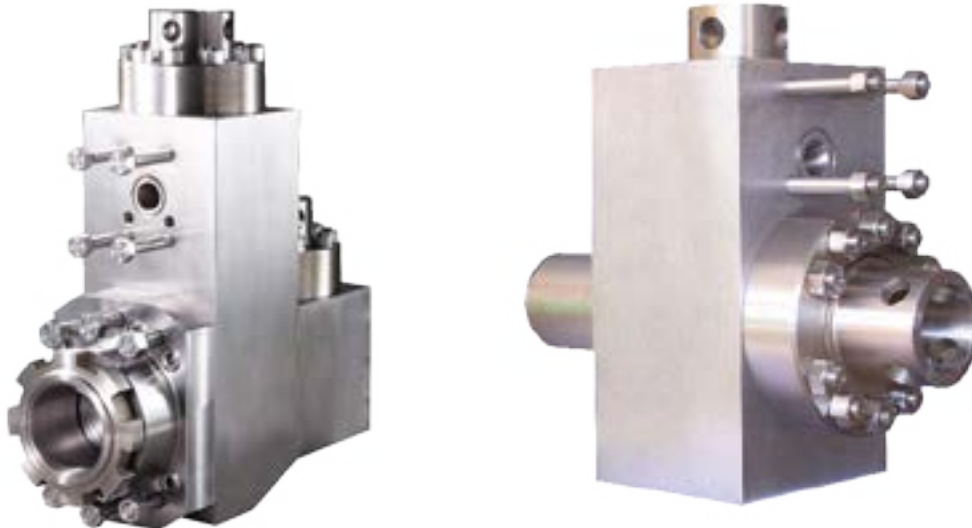
## INTRODUCTION

### FLUID END MODULES

Our high-strength, triple reduction, forged steel triplex fluid end modules are made from the highest alloy steel. Heat treated for long working life, they are machined to perfection and packaged for delivery with anticorrosion protection. The precision-made jewelry-like exterior finish reflects our superior quality.

#### Features

- Completely interchangeable with OEM.
- Premium-forged alloy steel.
- Made on CNC boring mills.
- Strict computer controlled heat treat procedures.
- Rigid inspection.
- Rated for all drilling operations up to 7,500 psi.



## FLUID END EXPENDABLES

**TSC**

**WF1600BH (7500 PSI)**

**7-1/2 x 12**

LINERS		ZIRCONIA LINERS	LINER GASKETS	PISTONS				PISTON RUBBERS
SIZE	PART NUMBER	PART NUMBER	PART NUMBER	URETHANE BONDED	RUBBER BONDED	N'DURALL BONDED	REPLACEABLE RUBBER	PART NUMBER
4"	TS-0259-40HP	TS-07466400	-	LLU-40-K15	LL-40-K15	HPW-40-K15	I-40-K15	TM-40-KR
4 1/2"	TS-0259-44HP	TS-07466450	G-265 *	LLU-44-B15	LL-44-B15	HPW-44-B15	I-44-B15	TM-44-BR
5"	TS-0259-50HP	TS-07466500	G-265 *	LLU-50-B15	LL-50-B15	HPW-50-B15	I-50-B15	TM-50-BR
5 1/2"	TS-0259-54HP	TS-07466550	G-263 *	LLU-54-B15	LL-54-B15	HPW-54-B15	I-54-B15	TM-54-BR
5 3/4"	TS-0259-56HP	TS-07466575	-	LLU-56-B15	LL-56-B15	HPW-56-B15	I-56-B15	TM-56-BR
6"	TS-0259-60HP	TS-07466600	G-261 *	LLU-60-B15	LL-60-B15	HPW-60-B15	I-60-B15	TM-60-BR
6 1/4"	TS-0259-62HP	TS-07466625	G-283 *	LLU-62-L15	LL-62-L15	HPW-62-L15	I-62-L15	TM-62-LR
6 1/2"	TS-0259-64HP	TS-07466650	G-284 *	LLU-64-L15	LL-64-L15	HPW-64-L15	I-64-L15	TM-64-LR
6 3/4"	TS-0259-66HP	TS-07466675	G-287 *	LLU-66-L15	LL-66-L15	HPW-66-L15	I-66-L15	TM-66-LR
7"	TS-0259-70HP	TS-07466700	G-285 *	LLU-70-L15	LL-70-L15	HPW-70-L15	I-70-L15	TM-70-LR
VALVES, SEATS, SPRINGS						GASKETS		
	4 WEB DESIGN	3 WEB DESIGN	FULL OPEN (1)	FULL OPEN (2)		PART NUMBER		
VALVE	TS-7-EEF	-	TS-0985M	TS-7-V1	VALVE COVER GASKET	P-129		
SEAT	TS-7-DDB12	-	TS-1440M	TS-7-S12	CYLINDER HEAD GASKET	-		
SPRING	TS-5710-115	-	-	TS-5710-115L	WEAR PLATE GASKET	TS-1290344		
INSERT (Urethane)	TS-7-WI	-	TS-7-MI	TS-7-FI	EXTENSION ROD SEAL	TE02030601-03-11		
INSERT (Rubber)	TS-7-WR	-	-	-	EXTENSION ROD BAFFLE	TE02030601-03-06-DAD		
PISTON ROD & EXTENSION ROD								
ROD CLAMP	PISTON ROD STUD	PISTON NUT	THREADED TYPE PISTON ROD	CLAMP TYPE PISTON ROD	SUB ROD	THREADED TYPE EXTENSION ROD	CLAMP TYPE EXTENSION ROD	
TM12P-03-08	N/A	TM-NUT	N/A	TM-258-A	TM-258-B	N/A	WF130-103-030-B	
FLUID END MODULE								
SUCTION MODULE STUDDER		DISCHARGE MODULE STUDDER		MODULE SEAL SET		STUDS & NUTS SET		
TS-80704001		TS-80704000		TM12PHPM-SEALKIT		TM12PHPM-STUDSETD TM12PHPM-STUDSETS		

TSC does not warrant or represent that any of such information is accurate, or that any products listed are compatible with each other.  
Any deviations from the OEM products should be verified as to compatibility.

TSC Manufacturing and Supply LLC, 13788 West Road, Suite 100, Houston, Texas 77041, USA  
Tel: +1 832 456 3900 Fax: +1 832 456 3998 E-mail: sales@t-s-c.com